

Guide to Professional Registration with the Engineering Council

What is professional registration?	2
Am I eligible to apply?	2
Professional registration titles – definitions and recognised qualifications	2
Engineering Technician (EngTech)	2
Recognised qualifications for EngTech:	3
Incorporated Engineer (IEng)	3
Recognised qualifications for IEng:	3
Chartered Engineer (CEng)	4
Recognised qualifications for CEng:	4
Application process	4
Stage 1	4
Stage 2	5
IRSE Licence holders applying for EngTech registration [5]	5
Final steps	6
How long will it take?	6
How much will it cost?	6
What to do next?	6
References and links	6
Appendix A: Overview of professional registration titles	7
Appendix B: Flowchart showing the IRSE process for professional registration	8

What is professional registration?

Professional registration as an Engineering Technician (EngTech), Incorporated Engineer (IEng) or Chartered Engineer (CEng) enables you to demonstrate your knowledge, skills and commitment as an engineer and provides a benchmark through which the public, employers and their customers can be assured that you have met globally recognised professional standards. [Appendix A](#) below provides an overview of the three professional registration titles.

Professional registration provides a valuable addition to any engineer's CV.

The IRSE is licenced by the Engineering Council to assess an applicant against a set of criteria and standards, laid down by the Engineering Council, and to recommend the applicant's inclusion on the register of professional engineers. These standards are set out in the Engineering Council's UK Standard for Professional Engineering Competence (4th edition) (UK-SPEC (4th edition)) and define the level of knowledge, understanding, competence and relevant work experience required for each of the registration titles. The UK-SPEC documents can be found on the Engineering Council website – engc.org.uk/standards-guidance/standards/uk-spec/ – there is also a link from the References section below [\[1\]](#).

Am I eligible to apply?

Professional registration is open to all engineers and technicians who can demonstrate knowledge, competence and commitment to perform professional work to the necessary standard.

Anyone wishing to be registered must apply through one of the professional engineering institutions licensed by the Engineering Council, of which the IRSE is one. You must be a fully paid-up member of the IRSE before applying for professional registration through the IRSE.

Before you decide to apply, you should first consider the definitions of each of the three titles of registration and the associated recognised qualifications, these are outlined below.

You will be required to not only meet the recognised qualification for the registration title that wish to apply for but also demonstrate that, through your work experience, you meet the competence and commitment for registration. You will also be required to provide evidence of your continued professional development (CPD) to demonstrate how your knowledge, experience, competence and commitment have developed as you have moved through your career. It is good practice to start recording your CPD as soon as possible in your career and to review this regularly. The 'Qualifications & Careers' section of the IRSE website has more information and guidance to help you with recording you CPD (see [Maintaining your Competence](#)). Once you are professionally registered you will be required to maintain a record of your CPD activity in order to retain your registration title [\[2\]](#).

Those who feel their experience is relevant to one of the titles, but do not have the recognised academic qualifications, can submit their career history and education and training record for assessment. Where appropriate they will then be advised on the nature and extent of any remaining evidence of knowledge and understanding required.

Professional registration titles – definitions and recognised qualifications

Engineering Technician (EngTech)

Engineering Technicians apply proven techniques and procedures to the solution of practical engineering problems. They are required to apply safe systems of work and are able to demonstrate:

- evidence of their contribution to either the design, development, manufacture, commissioning, decommissioning, operation or maintenance of products, equipment, processes or services
- supervisory or technical responsibility

- effective interpersonal skills in communicating technical matters
- commitment to professional engineering values.

Recognised qualifications for EngTech:

Typically, applicants will have completed an Advanced/Modern Apprenticeship or other work-based learning programme approved by a licensed professional engineering institution, alternatively, alongside appropriate work experience, they will hold:

- a qualification, approved by a licensed professional engineering institution, in engineering or construction set at level 3 (or above) in the Qualifications and Credit Framework/National Qualifications Framework for England and Northern Ireland, or level 6 (or above) in the Scottish Credit and Qualifications Framework, or at level 3 (or above) in the Credit and Qualifications Framework for Wales, or
- equivalent qualifications approved by a licensed professional engineering institution, such as an IRSE Licence.

Many potential Engineering Technicians have not had the advantage of formal training but are able to demonstrate that they have acquired the necessary competence through substantial work experience. Individuals without the types of qualifications described above may apply for an Individual Route assessment. This process, administered by the IRSE, includes assessment of prior learning and of current performance. Evidence of employer recognition of competences and relevant skills may be helpful.

Incorporated Engineer (IEng)

Incorporated Engineers maintain and manage applications of current and developing technology, and may undertake engineering design, development, manufacture, construction and operation. They are able to demonstrate:

- the theoretical knowledge to solve problems in developed technologies using well proven analytical techniques
- successful application of their knowledge to deliver engineering projects or services using established technologies and methods
- responsibility for project and financial planning and management together with some responsibility for leading and developing other professional staff
- effective interpersonal skills in communicating technical matters
- commitment to professional engineering values.

Recognised qualifications for IEng:

- an accredited [\[3\]](#) Bachelors degree in engineering or technology, or
- a Higher National Diploma or a Foundation Degree in engineering or technology (achieved before September 1999)
- a Higher National Diploma or a Foundation Degree in engineering or technology (started after September 1999, but before September 2010 in the case of an HNC), plus appropriate further learning to degree level (which may include passing the full IRSE professional examination), or
- an NVQ4 or SVQ4 which has been approved for the purpose by a licensed professional engineering institution, plus appropriate further learning to degree level (see www.qaa.ac.uk for further details of qualification levels and Higher Education reference points)

Applicants who do not have recognised qualifications may demonstrate the required knowledge and understanding in other ways but must clearly demonstrate they have achieved the same

level of knowledge and understanding as those with recognised qualifications. Such applicants may be able to apply for an Individual Route assessment. This process, administered by the IRSE, includes assessment of prior learning and of current performance. Evidence that demonstrates an appropriate level of knowledge and understanding of engineering principles may be helpful.

Chartered Engineer (CEng)

Chartered Engineers develop solutions to engineering problems using new or existing technologies, through innovation, creativity and change and/or they may have technical accountability for complex systems with significant levels of risk. Chartered Engineers are able to demonstrate:

- the theoretical knowledge to solve problems in new technologies and develop new analytical techniques
- successful application of the knowledge to deliver innovative products and services and/or take technical responsibility for complex engineering systems
- accountability for project, finance and personnel management and managing trade-offs between technical and socio-economic factors
- skill sets necessary to develop other technical staff
- effective interpersonal skills in communicating technical matters.

Recognised qualifications for CEng:

- an accredited [3] Bachelors degree with honours in engineering or technology, plus either an appropriate Masters degree or Engineering Doctorate (EngD) accredited by a professional engineering institution, or appropriate further learning to Masters level (which may include passing the full IRSE professional examination) (see www.qaa.ac.uk for further details of qualification levels and Higher Education reference points)*, or
- an accredited integrated MEng degree.

Applicants who do not have recognised qualifications may demonstrate the required knowledge and understanding in other ways but must clearly demonstrate they have achieved the same level of knowledge and understanding as those with recognised qualifications. As for IEng above, such applicants may be able to apply for an Individual Route assessment. This process, administered by the IRSE, includes assessment of prior learning and of current performance. Evidence that demonstrates an appropriate level of knowledge and understanding of engineering principles may be helpful.

Application process

The application process for professional registration is shown visually in the flowchart at [Appendix A](#) below. An administration fee is charged by the IRSE to process your application.

Stage 1

If you are a fully paid-up member of the IRSE we will firstly ask you to complete and return the 'Initial Application Form for Engineering Council Registration' (available to download from the Registration page of the IRSE website [4]). If you are not yet a member of the IRSE you will need to complete the application process – more guidance and information can be found on the [Membership pages](#) of the IRSE website where an application form can also be downloaded. If you have any questions regarding membership, please contact us at membership@irse.org.

Your completed Initial Application form will enable us to confirm that you meet the Engineering Council's recognised qualifications (i.e. you have the required underpinning knowledge) for the registration title you wish to apply for. If you do, you will have met the **interim stage of registration** and we will send you a Summary of Evidence form to complete (unless you are applying for EngTech and hold a current IRSE Licence at the right level – [see sub-section below](#)).

If your academic and professional engineering qualifications do not match the Engineering Council's requirements the information you have provided will be submitted to IRSE's Individual Case Panel (ICP), a group of experienced engineers and academics.

The ICP considers each case separately and will make a recommendation based on the information you have provided. You will be informed of this recommendation which will usually be one of the following, either:

- A. the ICP will recommend that you have sufficient engineering academic and/or professional qualification(s) to reach the Engineering Council's requirements for EngTech, IEng or CEng; or
- B. the ICP will recommend a route forward for you which may include one of the following:
 - you apply for a different professional registration title, and/or
 - you gain a further engineering academic and/or professional qualification(s), such as the IRSE Professional Examination, or
 - you provide additional or alternative information to demonstrate your knowledge and learning.

Stage 2

Once you have successfully completed Stage 1, (also known as the interim stage), of the registration process you will be required to complete the Summary of Evidence (SoE) report for the relevant registration title. The SoE lists the Engineering Council's UK-SPEC competences and enables you to provide the evidence against each that demonstrates you meet the requirements for the registration title you are applying for. Guidance notes to help you with the completion of the SoE will also be sent to you.

Once you have submitted it, your completed SoE will be assessed by two experienced IRSE Assessors. If you have applied for CEng or IEng, and the Assessors are happy with the information you have provided, you will be invited to a Professional Review Interview (PRI) with the Assessors. During the interview you will be able to discuss the evidence you have included in your SoE and any other relevant aspects of your work.

The Assessors will score your performance at the PRI and submit a report outlining their recommendations to the IRSE Membership Committee. The Committee will consider the report and submit their final recommendation to IRSE Council for ratification.

If you apply for EngTech registration your SoE will be assessed by two IRSE Assessors, as for IEng and CEng, and you may be asked to attend a PRI, but this will only be if the assessors deem necessary. If you are not invited to attend a PRI, the assessors will score the information you have provided and submit a report to the IRSE Membership Committee which will be dealt with as described above.

IRSE Licence holders applying for EngTech registration [\[5\]](#)

If you hold a current IRSE Licence at the right level and are applying for EngTech registration you will not be required to submit an SoE as the information you provided to obtain your Licence (the Competence Assessment Checklist or CAC) will be used instead. This information will not be re-assessed **but** the IRSE Membership Committee will still consider your application for registration and make its recommendations to IRSE Council in the same way as described above.

Final steps

Once the IRSE Council has ratified the recommendations made by the Membership Committee you will be notified of the outcome and your name will be published in IRSE News. You will be required to pay a registration fee and your first annual fee to the Engineering Council, which the IRSE collect on their behalf. When these fees are paid the IRSE will notify the Engineering Council of your successful application and they will provide you with a certificate and welcome pack confirming your professional registration.

Once you have received this confirmation from the Engineering Council you will be able to use the appropriate designatory letters after your name (EngTech, IEng or CEng).

To retain the ability to use the professional registration title you have achieved you will need to meet the ongoing requirements of the Engineering Council, which will be specified in your welcome pack, this will include retaining your membership of the IRSE and abiding by the Membership Terms and Conditions and the IRSE Code of Conduct, undertaking and recording your CPD and paying your annual Engineering Council registration fee (which the IRSE will collect with your membership subscription).

It is important to keep your CPD records up to date as these may be requested for audit by the IRSE. The Engineering Council require the IRSE to undertake an audit of a randomly selected number of CPD records belonging to registrants each year and failure to comply with this audit could result in your removal from the register of engineers and technicians and you having to reapply.

How long will it take?

In straightforward cases, the process can be completed in around twelve weeks, but this will, of course, depend on how quickly you are able to complete and return your SoE. Once we notify the Engineering Council, we would expect them to confirm your registration within a few weeks.

How much will it cost?

The Engineering Council charge a one-off registration entry fee and require registrants to pay an annual fee to retain their name on the Register. These fees are collected by the IRSE on behalf of the Engineering Council and the current rates can be found on the Engineering Council website [\[8\]](#).

In addition, the IRSE make a one-off administrative charge for processing your application which is payable if you choose to proceed following our feedback on your Initial Application Form. Please contact us at registration@irse.org for the current rates.

What to do next?

Now that you have read through this information just complete the 'Initial Application for Engineering Council Registration' and email it to registration@irse.org with the relevant information (as requested on the form). We will then get back to you as soon as we can to advise you of the next step.

If you have any questions, please don't hesitate to contact us at registration@irse.org and we will do our best to support you.

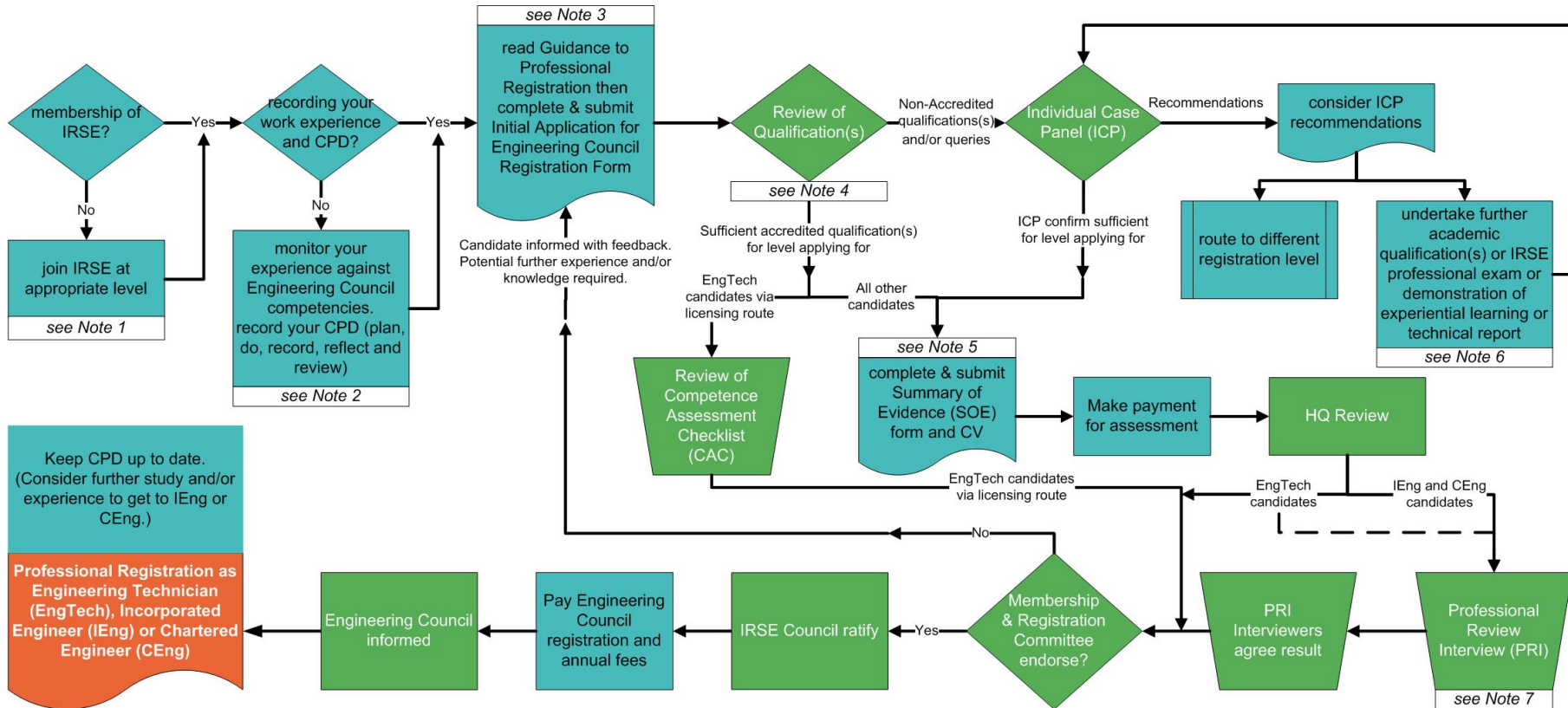
References and links

- [1]. [Engineering Council UK-SPEC \(4th edition\)](#)
- [2]. [Engineering Council CPD Code for Registrants](#)
- [3]. [Qualifications accredited by the Engineering Council](#)
- [4]. [IRSE Initial Application Form for Professional Registration with the Engineering Council](#)
- [5]. [EngTech registration with an IRSE Licence](#)
- [6]. [IRSE Membership Terms and Conditions](#)
- [7]. [IRSE Code of Professional Conduct](#)
- [8]. [Engineering Council fees for professional registration](#)

Appendix A: Overview of professional registration titles

Title:	Engineering Technicians	Incorporated Engineers	Chartered Engineers
Descriptor:	Applies proven techniques and procedures to solve practical engineering problems. Applies safe systems of work.	Maintains and manages applications of current and developing technology, and may undertake engineering design, development, manufacture, construction and operation.	Develops solutions to engineering problems using new or existing technologies, through innovation, creativity and change. May be accountable for complex systems with significant levels of risk.
Key attributes:	<ol style="list-style-type: none"> 1. Contribution to either the design, development, manufacture, commissioning, decommissioning, operation or maintenance of products, equipment, processes or services 2. Supervisory or technical responsibility 3. Effective interpersonal skills in communicating technical matters 4. Commitment to professional engineering values 	<ol style="list-style-type: none"> 1. The theoretical knowledge to solve problems in developed technologies using well proven analytical techniques 2. Successful application of their knowledge to deliver engineering projects or services using established technologies and methods 3. Contribution to project and financial planning and management together with some responsibility for leading and developing other professional staff 4. Effective interpersonal skills in communicating technical matters 5. Commitment to professional engineering values 	<ol style="list-style-type: none"> 1. The theoretical knowledge to solve problems in new technologies and develop new analytical techniques 2. Successful application of the knowledge to deliver innovative products and services and/or take technical responsibility for complex engineering systems 3. Responsibility for financial and planning aspects of projects, subprojects or tasks 4. Leading and developing other professional staff through management, mentoring or coaching 5. Effective interpersonal skills in communicating technical matters 6. Commitment to professional engineering values

Appendix B: Flowchart showing the IRSE process for professional registration



- Note 1 Appropriate level of membership according to your qualifications and experience
 - Note 2 Engineering Council requirements. See UK-SPEC Fourth Edition for full list of competence requirements. www.engc.org.uk/ukspec. Use mycareerpath or another method to record your CPD
 - Note 3 Forms available through IRSE website. www.irse.org/membership/registration
 - Note 4 Engineering Council requirements. See UK-SPEC Fourth Edition for full list of education requirements. www.engc.org.uk/ukspec
 - Note 5 This stage not required for those applying for EngTech through licence route; they must complete the appropriate additional competency statements on their application / competence assessment checklist.
 - Note 6 Applicants must clearly demonstrate they have achieved the same level of engineering knowledge and understanding as those with recognised qualifications. Discuss ways to demonstrate this with IRSE HQ.
 - Note 7 Interview for IEng and CEng will cover all required competencies and commitments. EngTech applicants may also be asked to an interview.
- August 2021**

Key

- Cyan Action by candidate for professional registration (EngTech, IEng or CEng)
- Green Action by IRSE Headquarters
- Orange Action by Engineering Council



For more information visit www.irse.org/membership/registration or contact the IRSE by emailing registration@irse.org or ringing +44 (0)20 7808 1185